

FROM THE PRINCIPAL'S DESK TERM 2 WEEK 4

Dear Families,

THE TERM SO FAR:

Well we certainly have had an eventful start to this term. With the easing of many of the recent restrictions, it will be nice to return to the planned events we have scheduled for the term, and our daily school life prior to this most recent snap lockdown.

STAY CONNECTED!

In the event of any further lockdowns, or restrictions, it is important for all families to access our online Parent CONNECT Noticeboard:

Updates pertaining to these matters, and overall school operations and events, are regularly posted here and you will receive notifications via the CONNECT app.

1. Register a valid email address with Belmay Primary School
2. You will receive an email with login information from the Department of Education
3. Click on the link and login

SEMESTER REPORTS 2021

This year Semester reports will be issued electronically via CONNECT. I will provide more information in the coming weeks as to the specific upload dates and how to access.

BELMAY PRIMARY SCHOOL P&C

I encourage you to come along to our next Belmay Primary School P&C meeting.

WHEN: Wednesday 12 May

TIME: 6-7pm

WHERE: Conference Room 5

THE FATHERING PROJECT 2021

Due to the current COVID post lock down restrictions, I was contacted by Rory Murray who suggested a postponement in order to have a mask-free meeting.

We feel that our first meeting together as a group would benefit greatly without the restrictions of mask wearing in terms of talking and getting to know each other.

I have confirmed with Rory that the new date will be Tuesday 18 May, 6pm in the new STEM room

TELL THEM FROM ME (TTFM): ONLINE PARENT SURVEY 2021

A very big thankyou to all of the parents who completed the *Tell Them From Me (TTFM)* Partners in Learning survey. As we value the role of parents and carers within our school community, we would greatly appreciate your feedback. The information you provide will be used to maintain our commitment to working together in partnership to further improve student learning and wellbeing at Belmay Primary School.

TTFM is a survey annually for students Years 4-6 and teachers which provides responses to a series of questions around our school's community. By gathering opinion this way we can ensure that we are engaging all stakeholders in our school's focus for continual improvement.

COMING

EVENTS

Breakfast Club

Monday and Friday
8:00am
All Welcome!
Enter through Epsom
Ave gate

~

NAPLAN

Tues 11 to Fri 21 May

~

P&C Meeting

Wed 12 May
6-7pm
Conference Rm 5

~

School Council Meeting

Fri 14 May
9.30am Conference
Rm 5

~

National Sorry Day

Wed 26 May

~

School Leaders' Fundraising

PJ - Dress Up Day
Thurs 3 June

~

Assembly - Rm8

Fri 4 June

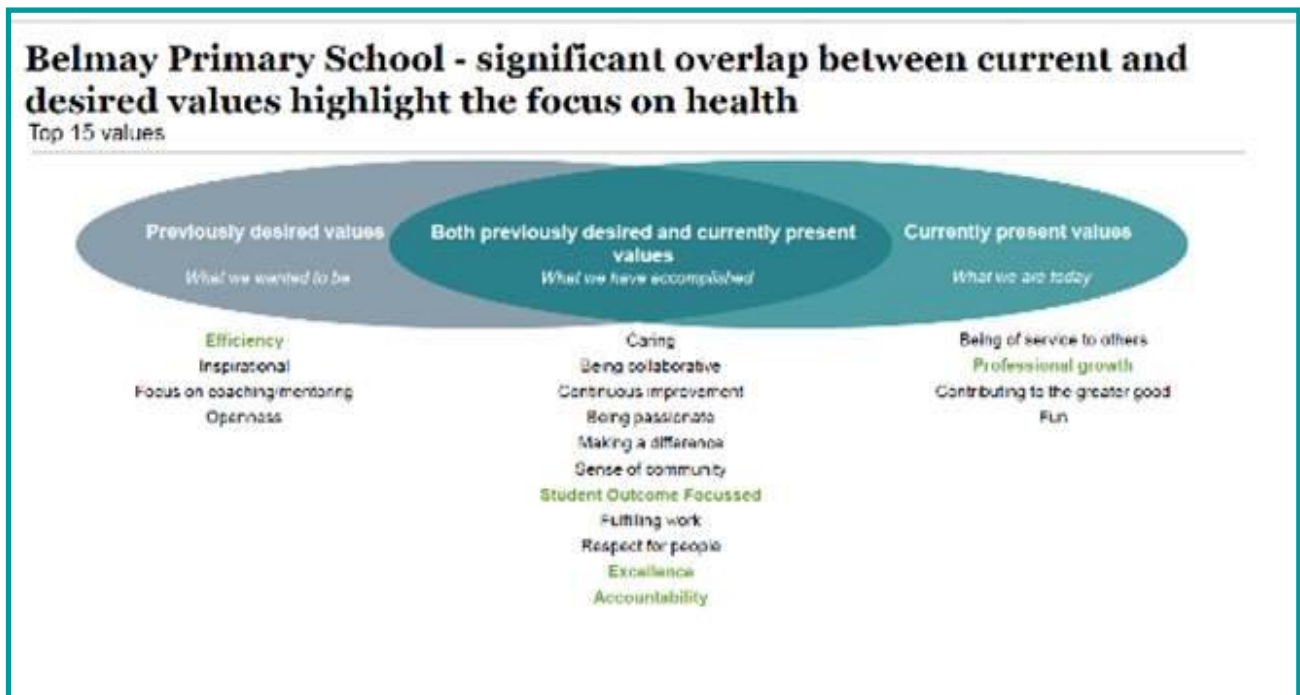


From the Principal's Desk continued ...

STAFF SURVEY: ORGANISATIONAL HEALTH INDEX SURVEY RESULTS 2021

The organisation's OHI score helps our school plan and implement a change program that leads to sustainable results.

OUR SCHOOL VALUES 2021



WA Education Awards 2021

Passionate educators are shaping the future through education. Who deserves your recognition?

Our outstanding teachers, principals, deputy principals and school support staff in Western Australian public schools, provide a world class education to every student in every classroom, every day.

They come from all walks of life to bring a wealth of knowledge and experience to our schools and classrooms. They are leaders in educational innovation and reform. They see the potential in every child, aspiring to give students a pathway to a successful future and help them grow from strength to strength.

In 2021, there are new categories for deputy principals, as well as changes to eligibility for past winners.

This year, all nominations go in a draw to **win a 75 inch interactive screen** to the value of \$8000 installed at their school, thanks to our sponsor [K2AV](#).

Public school staff, school board and council chairs, and P&C presidents can nominate a staff member or public school for an award. We encourage you to acknowledge hard work, commitment and passion by submitting a nomination. Nominations close 5.00pm, Thursday 8 July 2021.

Who will you recognise? • WA Premier's Primary Teacher of the Year • WA Premier's Secondary Teacher of the Year • WA Premier's Excellence in Aboriginal Education Award • WA Beginning Teacher of the Year • WA Education Assistant of the Year • WA Aboriginal and Islander Education Officer of the Year • WA School Services Staff Member of the Year • WA Primary School of the Year • WA Secondary School of the Year • WA Primary Principal of the Year • WA Secondary Principal of the Year • WA Primary Deputy Principal of the Year • WA Secondary Deputy Principal of the Year.

Download the [WA Education Awards 2021 Nomination Guide \(.pdf\)](#).

From the Principal's Desk continued ...

NAPLAN 2021: Years 3 and 5 11–13 May

As children progress through their school years, it is very important that checks are made along the way to see how well they are learning the essential skills of reading, writing, grammar and punctuation and mathematics – skills that will set them upon the path to success as adults.

NAPLAN is a point-in-time assessment that allows parents to see how their child is progressing in literacy and numeracy against the national standard and compared with their peers throughout Australia. At the classroom level, NAPLAN provides additional information to support teachers' professional judgement about student progress.

<https://www.nap.edu.au/naplan/parent-carer-support>



Our Children
Our Communities
Our Future

In early 2021, our school, along with thousands of others across the country will begin preparations for the fifth Australian Early Development Census (AEDC).

The AEDC gives us a national picture of the development, health and wellbeing of children in their first year of full-time school. Since 2009, the Census results have helped communities, schools and governments plan services and develop better policies to target support for children and families.

Students will not miss any class time, and parents/carers will not need to supply schools with any new information for the Census. The AEDC gives us data at a school and community level - it isn't an assessment of individual students.

Some teachers have also noticed that completing the assessments made them more aware of the needs of individual students and the class as a whole and that the Census results are useful in planning for transitions to Year 1 and developing class programs.

Participation in the AEDC is voluntary. Parents/carers do not need to take any action unless they choose not to include their children in the Census.

To find out more about the Census and how communities are using the data to help students and families visit the AEDC website:

I look forward to seeing you all over the coming term as we enjoy what is sure to be a very busy and productive Term 2!



CONGRATULATIONS!!!!

Chantelle, Sequoiah's Mum who is the winner of the "Tell Them from Me Survey" hamper.

Principal's Awards for Reading and Acts of Kindness



Anzac Day Ceremony





Belmay School Council

Belmay's School Council is comprised of staff members, parents and community members. Our current School Council is made up of the following members:

The next school council meeting is scheduled for Friday 14 May 2021 at 9.30am.

2021

Chairperson

Neil Clarke (Chair)

Principal

Sarah Durham

Parents and Community

Cassie Rowe (MP)

Jilaga Murray-Ranui

Jenna Haerewa

Jacqui Hamling

Ronnie O'Neil (Principal LDC)

Kylie Watson (P&C Representative)

School Representatives

David Gerstorfer

Terry Harney (DP)

Hannah Klauz

Deb Bradshaw (Secretary)



Cloverdale School Dental Clinic information

Cloverdale Dental Clinic is open from **8am – 4pm** Monday to Friday.

We are a free service and cater for school age children/teens from **Kindy & Pre-Primary from the year they turn 5 to the end of year 11 or their 17th Birthday, whichever occurs first.**

We are a Bachelor of Oral Health Final year placement clinic during university semesters. An experienced tutor oversees all check-ups and procedures.



It is not compulsory to enrol with the School Dental Service, if your children are having regular dental check-ups and treatment with their private family dentist, please feel free to remain with them.

If your address has changed/changes, please call us, as we send appointments to your home address, we also require current mobile phone numbers to send out text message reminders.

If your child has a toothache, please phone us on **9479 7222** between **8am-4pm**, if you have an emergency outside of work hours, please contact your family dentist or the **Emergency Service** on **1800 098 818**.

Chaplain's Chat

Hi Belmay Families

Thanks again for your support for the School Leaders first fundraiser last Term. Our next fundraiser is this Term, Week 7, and Thursday 3 June. The theme will be **Pyjama Day**, and students are asked to wear normal shoes (no slippers), and dress appropriately. Donation is a gold coin, with funds going towards the Year 6 School Camp.

In Term 1 we worked on developing a School Leadership Handbook, with the addition of giving leaders a more defined role in the school. These handbooks will be available once the document is completed, and will be used by our Year 5 students when applying for a Leadership Role in 2022. Our present leaders have applied for the 5 different role groups (12 positions) and will be selected soon.

Resilience, a topic we hear about a lot, even more so with the uncertainty across the world. Catch phrases such as 'the ability to bounce back', and the ability to 'successfully manage life, and adapt to change and stressful events', don't just happen without support from the community around you. For parents and students, some great resources are:

Local Community Services:

- Communicare, who provide various supports, including events that target various needs <https://www.communicare.org.au/Events/?page=1> including Wellbeing Programs for Year 7-12 <https://www.communicareacademy.wa.edu.au/Student-Life-Wellbeing/Resilience-Programs>
- Kids Helpline - The number is 1800 55 1800. <https://kidshelpline.com.au>
- Resilience Kit is a five-session program that helps children who struggle with their emotions learn a better way to cope with life's challenges. <https://www.resiliencekit.com.au/>

Internet Resources:

- Maggie Dent – In particular, her book *Building Children's Resilience* <https://www.maggiedent.com/shop-category/books/>
- Michael Carr-Gregg has resources for supporting adolescents through various mental health challenges <https://michaelcarrgregg.com/resources-2>
- Justin Coulson has a number of resources <https://www.justincoulson.com/> his resources web site is <https://www.happyfamilies.com.au/>

Communicare, who provide various supports, including events that target various needs <https://www.communicare.org.au/Events/?page=1> including Wellbeing Programs for Year 7-12 <https://www.communicareacademy.wa.edu.au/Student-Life-Wellbeing/Resilience-Programs>

Kids Helpline - The number is 1800 55 1800. <https://kidshelpline.com.au>

Resilience Kit is a five-session program that helps children who struggle with their emotions learn a better way to cope with life's challenges. <https://www.resiliencekit.com.au/>

Internet Resources:

- Maggie Dent – In particular, her book *Building Children's Resilience* <https://www.maggiedent.com/shop-category/books/>
- Michael Carr-Gregg has resources for supporting adolescents through various mental health challenges <https://michaelcarrgregg.com/resources-2>
- Justin Coulson has a number of resources <https://www.justincoulson.com/> his resources web site is <https://www.happyfamilies.com.au/>

If your child is struggling in any way, please make sure to contact their teacher, or I am also available for support Ailine.Hurst@education.wa.edu.au .

Ailine Hurst - School Chaplain

